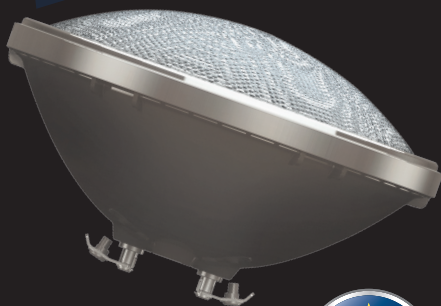
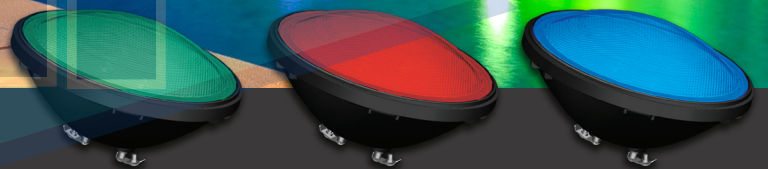




PAR56 12V LED

Swimming Pool Lamp



The **Sylvania PAR56 LED** represents a top class professional development for underwater illumination of swimming pools, fountains etc. By combining high power LEDs of red, green, blue & fixed white colours together with an internal microprocessor, it is capable of generating the full spectrum of colours. The lamp can

be operated in a mode of continuous colour changing, or fixed at any desired colour by briefly switching off and back on again. An internal flash memory remembers this choice even after the lamp is switched off. This is facilitated by the optional Sylvania remote control and receiver.



PAR56 12V LED Swimming Pool Lamp

FEATURES

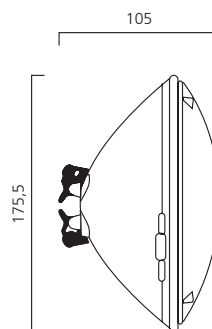
- Choice between RGB colour changing or fixed white version
- Full PPS (Polyphenylsulphide) plastic body, very resistant material for use in plastic and metal fixtures against corrosion by chlorinated water
- Optimised colour control program facilitates setting of desired light colour
- Internal memory can be programmed to remember last chosen colour
- Perfect retrofit solution, to replace all incandescent PAR 56 lamps
- Unique single-point light source for improved visual appearance, with advanced fresnel lens optics deliver impressive light and colour uniformity
- European production delivers outstanding performance and quality
- Unique sealing method, guarantees IP 68 water-tightness
- Low heat generation
- Long life 25000 hours



Code article	Description	Watt (W)	Voltage (V)	Current (A)	Total Lumen (lm)	Beam Angle (°)	Bulb	Base	Pack. Qty.
0060540	NEW PAR 56 LED-RGB	12	12V AC 50/60 Hz	1.67	R-G-B	40	PAR 56	Screw Lugs	6
0060541	New PAR 56 LED LAMP-White	18	12V AC 50/60 Hz	2.50	1000	40	PAR 56	Screw Lugs	6
OPTIONAL REMOTE CONTROL UNIT:									
0060542	PAR 56 LED RECEIVER-NEW	600 VA max	AC110/240V	Max. 3 A	-	-	-	Screw terminals	1
0060543	PAR 56 REMOTE CONTROL-NEW	-	2x3V battery	-	-	-	-	-	1



Dimensions (mm)



DIRECTIONS FOR USE

- Only for use with magnetic (non electronic) transformer.
- The remote control is an optional accessory; lamps also function with ordinary switches.